



A New Era

I'd like to take this opportunity to thank everyone who was inconvenienced by the construction work on the Sea Centre. It was a tricky eight months and while the end result is well worth the problems, we do appreciate your understanding.

The NZ Marina Operators Association visited the site in September. They agreed that the marina was leading the way in New Zealand. While there are still a very small minority who will never accept the benefits of the new facility they no longer have any credibility.

Business is booming, with income from the Sea Centre covering all its costs. In fact it is making a small profit – better than we had expected at this stage. With only 3 units out of 12 left to let we are in great shape. On top of this the development, including all the work on the hardstand, came to \$3.24 million, well within the \$3.5million budgeted for the project. A great result!

There has been some concern expressed on the loss of the hardstand to accommodate the Sea Centre. I expressed no doubt that we would be able to handle the demand easily and indeed we are. We have purchased another three two arm cradles bringing our total to 28, plus 4 sets of tripod stands. We can now have 32 boats up on the hard – more than we ever had in the past and this doesn't take into account the 3 we have in the Sea Centre.

What we haven't got yet is a café. We had to apply for an additional Resource Consent which took time to be approved. Because of the demand for the office units we let them all before the consent was granted. Still there are other ways to provide a café on site and they are being reviewed now!

Four years ago the development was just a vision for the Board and staff. We have had our hurdles to overcome and there were times when it felt the Sea Centre would never be built. The hard work, detailed analysis and meticulous planning have paid off. We have achieved something that will be an asset to the marina and Hutt City.

The facility will expand and I believe what we have now is only the first stage of a marine servicing hub that will provide services that will compete with anything in New Zealand.

All the Seaview Marina Staff and Board Members wish you a happy Christmas and prosperous New Year. Enjoy your boating and remember, if we can be of any assistance we will be manning the Travelift and office right through the break, except for the statutory holidays.

Alan McLellan
Marina Manager



A Great First Quarter For The Sea Centre

The Sea Centre is humming along and the new facilities are proving themselves, both functionally and income wise!

After four months of operation the new hardstand and the Sea Centre have moved the marina to another level of activity. Our first quarter results have been heartening.

The Facts Are:

- The Sea Centre is 80% occupied, with all but three of the twelve units left to lease.
- Bookings for the two large sheds leased out on a daily basis by SML are strong with one booked out for 12 months and the other for at least another 4 months.
- The facility is more than breaking even, in fact making a small profit at this stage.
- Tenants are all very positive about the improvement in business since moving into the facility -

Alan Burdan - 'I had 'Australis' in the large Unit 3 workshop and it saved me money on the work I had done as there were no down days for bad weather, and we were able to do long hours reducing the time the boat was on the hardstand'

Kevin Ryan - 'Having both 'Border Rings' and 'Captain Morgan' in Units 2 and 3 respectively has meant I can work unhindered on each vessel. These workshops are first rate facilities'

Russell Smith - 'As a boat builder, being able to work under cover in the large workshops has meant high productivity in a



KP MARINE



SEE US FOR ALL OF YOUR BOATING NEEDS!

- New and used boat sales
- Wellington dealers for Honda, Suzuki, Tohatsu Outboard engines.
- Service all makes and models of Outboard motors and marine diesel engines.
- Wellington dealers for Yanmar and Volvo Penta Diesel engines.
- We have a full Propeller repair and service department.
- Chandlery Shop stocking ropes, oils, resins, Inflatables, Batteries, Anodes and electronics include Furuno, Lowrance, Ray Marine and Uniden VHF's.



Steve Pack's Lady Sylvia

controlled environment. Much better for the quality of work and the speed of the job'

Bob Loizou, owner of the 19m launch, 'Kyrenia' - 'Being able to lift my boat in Wellington is a real positive. The concrete hardstand, the security and access to the trades in the Sea Centre was a bonus. The service and care of my vessel by the marina staff was first class'

- The concrete hardstand and new travelift are proving to be strategic additions to our operation. Business is booming and we have had to purchase 3 more cradles to add to the hardstand.
- We now have 5 three-arm cradles, 19 two-arm cradles, 4 launch cradles and 4 sets of tripod cradles for the hardstand. **In total 32 boats can be stored on site, with 3 also in workshops in the Sea Centre.**
- We have also found that we are getting interest from more non-licensees and their positive comments about the new service and facilities indicates more business will be on its way.
- Steve Pack's Lady Sylvia (pictured) was lifted out on 23 November. At 21.34m and 50 tonnes, she is the largest vessel lifted to date at Seaview Marina.



There's more than one use for a marina trolley!
Morgan Stuart McKeown gets a ride back to the boat with the shopping.

Cover Technologies NZ LTD

COVERTEC

MOBILE REPAIR SERVICE

NICK JONES
Managing Director

021 127 6093



Feature Vessel - Island Leader II

Island Leader II's voyage to her new home here at Seaview Marina proved not only to be a great testimony of her handling capabilities, but also to the skills of Mark Jessop and his crew from Jessop Marine, who encountered 14m seas with 60knot winds during the final leg of the Tasman crossing after leaving Port Lincoln, Australia. Some 20 days after setting sail then waiting in Tasmania for the weather window, the vessel finally arrived to join the New Zealand Diving & Salvage Ltd family.

Launched in 1984, Island Leader II was built and set up to be a supply vessel for the Abrolhos Islands in Australia, for lobster, stores and fuel transfer. She was later retired and sold on where she has spent the last few years as a servicing vessel for the tuna farms in Port Lincoln.

Since her arrival Island Leader II has been surrounded constantly by tradesmen and noise as she undergoes a refit to compliment the impressive capabilities she already has such as her fuel holding of 42,000L, 14,500L of fresh water and 35ton open deck capacity. The work currently being undertaken is a complete refit of the accommodation area to sleep 8, installation of a dive control room on the fly deck, electronics, a 10ton A-frame

and winches for 4 point mooring capability. This work is expected to be completed by the end of November and it certainly wouldn't be possible without the likes of John (Pirtek), Carl (Profab), Simon (Surge Electrical), Larry (Automarine Tech Ltd), Mony (Australian Engineer) and Gary (Builder).

Island Leader II's purpose is to compliment and support the other two NZDS vessels Shoman and Squalus in the fields of vessel supply, geotechnical investigations, sampling and diving operations. All of these vessels are based in the Seaview Marina.

For the last 28 years New Zealand Diving and Salvage Ltd have been providing diving and marine solutions throughout New Zealand and the Pacific. NZDS has a branch office in Auckland and Dunedin but Head Office and the extensive workshop have always been based here in the Seaview area. Areas that NZDS specialize in but are not limited to include, diving, salvage, in-water construction, survey, environmental investigations, geotechnical investigations, sampling and vessel supply solutions.

Island Leader II: Specifications

Design & Built: Kailis

Hull & Construction: Aluminium

Launched: 1984

Length: 23.9m

Draft: 1.8m

Beam: 6.9m

Engine: CAT C18 755hp

Fuel Tank Capacity: 42,000L

Cruise: 11 knots

Water Tank Capacity: 14,500L

Deck Load: 35 ton



134 Gracefield Rd, Seaview Lower Hutt

Ph: 0508 348377

Email: nzds@nzds.co.nz

Website: www.nzds.co.nz

BOATS ANTIFOULED PMS Ltd

PHONE: 04 3899 282

MOBILE: 021 946 072

BRUCE HILLS

EMAIL: BRUCE-PMS@VODAFONE.CO.NZ

Diesel Polishing (Cleansing)

Filters diesel to remove water and foreign matter through filters and microbial decontamination unit

Call Alick Jenner
(04) 565-0174

Marina Office gets a makeover

A need for more space and storage has led to some changes in the marina office. Pictured is the new counter which has been installed to create a reception area and new office for Suzanne.

A wall separating the reception and kitchen has turned the kitchen space into a separate lunch/meeting room for staff and office for Mike and Jono.

The coffee table, couches and computer have been moved to the Sea Centre lunchroom.

Customers wanting to use the computer are welcome to do so – there is no charge for this service. In addition to the computer the Sea Centre lunchroom (pictured) also has a coffee machine, filtered water, sink, microwave and toaster for the use of marina customers. A first aid kit is located above the sink.



The remodeled marina office reception area



The Sea Centre lunch room

Attention All Liveaboards

Marina operators cannot legally supply shore power to a vessel which does not have a current Electrical Warrant of Fitness. For this reason Seaview Marina has been undertaking steps to ensure that all vessels connecting to shore power display a current Warrant of Electrical Fitness.

It is becoming clear that we need to apply the Electrical Warrant of Fitness requirement to all liveaboards.

If you do not have a current Electrical Warrant of Fitness, or your warrant has expired, please take steps to remedy this immediately.

For those vessels that have a distribution board which does not comply, it is possible to purchase a fully operational fused board which will have a warrant included in the cost. This enables your vessel to become fully compliant without the need for expensive rewiring.

Trevor Burgess of Chat Enterprises Limited has been working with electricians and electrical inspectors to produce such a distribution board. Trevor can be contacted on mobile: 029 620 0290.

From this date forward it will be a mandatory requirement for all new liveaboards to have a current EWof.

It is our intention to give existing liveaboards a reasonable period to ensure their vessels are fully compliant. Therefore, we are giving you until 1 June 2011 to obtain your Electrical Warrant of Fitness. After this time the marina will cease to supply power to non-compliant vessels.

If you have any queries or wish to discuss this matter further please do not hesitate to contact marina staff.

Location of Emergency Equipment at Seaview Marina

Your safety is important to us.

Alan McLellan, Mike Croft and Suzanne Willis are fully trained in Workplace First Aid and all staff are trained in the use of the Zoll defibrillator

We have a range of equipment on site for use in emergencies.

Please note the equipment type and location – it will save time and could save a life!

Fist Aid Kits	In the Marina Office and Sea Centre lunchroom
Defibrillator	In the Marina Office
Telephones	In the Marina Office
Mobile Fire Pump	Ablution Block
Fire Extinguishers	On all piers, in the MarinaOffice and the Sea Centre

Please report all emergencies to Marina Staff:



Of ce
ph: 568 3736

Alan McLellan
ph: 0274 435 330

Mike Croft
ph: 0275 022 888

Suzanne Willis
ph: 021 121 6918

BURNSCO

MARINE AND LEISURE

Burnsco is NZ's largest chain of stores selling boating, fishing and motorhome gear. In August it moved its Wellington store to Seaview Marina.

"We were in Petone, next to the Warehouse, and the store was trading well", said Bruce Macleod, Burnsco's MD. "But when Seaview Marina invited us to be part of their new marine cluster we jumped at the chance. We could see that Seaview would become the epicentre of Wellington boating so it was natural for a Burnsco store to be here."

The new store is bright and spacious and easy to browse and self-shop. The huge range on display includes safety gear, paint, marine electronics, wet weather clothing, fishing tackle, anchors, kayaks, inflatable boats, yacht fittings, plumbing equipment, trailer accessories, 12 volt fridges, lighting, stoves and marine toilets.

Burnsco is renowned for its friendly and knowledgeable staff. David Erasmus is the manager of the branch and has nearly 20 years' experience in the marine industry. David is assisted by John McSherry, a competitive local sailor who has raced in the Sydney to Hobart. Grant Porter (a volunteer Coastguard member for over 10 years) and Brock Beyer (a passionate fisherman who has won many local fishing competitions) make up the rest of the permanent team.

A big favourite with customers is the Burnsco loyalty card. Cardholders enjoy exclusive pricing on selected lines, instant Reward Vouchers, brochures posted to their address, give-aways and automatic entry into competitions. Customers can pick up their free Burnsco Card in the store and immediately take advantage of these benefits.

The store has plenty of parking and is open 7 days a week. Weekday hours are 8.30am to 5.30pm and weekend hours are 8.30am to 5pm.



Burnsco staff (from left): John McSherry, Brock Beyer, Manager Dave Erasmus and Grant Porter



Unit 1, The Sea Centre
100 Port Road, Seaview,
Lower Hutt
WELLINGTON
Ph: 04-568 8062, Phil: 021 648 304
Fax: 04-568 8072
Straitmarine@straitmarine.co.nz
www.straitmarine.co.nz



Authorised Dealers for:

- Volvo Penta
- Yanmar
- Cummins Onan



Seaview Marina Boat Yard and Sea Centre

Offering the most extensive

NEW - 50 Tonne Marine Travelift Our new travelift has some great features

- Ability to weigh your vessel
- Flexible sling positions
- Capable of lateral adjustment to straighten boats in the slings
- Can lift deep draft vessels
- No need to remove forestays

NEW - Three sheds large enough for working on vessels undercover - in all weathers.

- Two large 220m² sheds with three or single-phase power, security doors, monitoring, natural and artificial lighting -so you can work on your vessel day or night. The cost of hiring a large shed is \$132.25 (GST inclusive) per day. Power is charged on usage.
- One medium 150m² shed with single-phase power, security doors and monitoring and natural and artificial lighting. The cost of hiring the medium shed is \$86.25 (GST inclusive) per day. Power is charged on usage.
- Casual undercover storage in Units 4 and 5B is available at rates negotiated by the Marina Manager.

In addition, Seaview Marina Boat yard offers:

- The Sea Centre complex with marine-related trades on your doorstep- Burnsco Marine and Leisure, Strait Marine, City and Sea Canvas, Gulf Group Marine Brokers, Wellington Fishing Charters and Atomix Boats
- Friendly, helpful staff
- 7 day a week operation
- Boat hoist operating between 7:30am and 6pm over summer
- Freedom to work on your own vessel, or hire your preferred contractor
- Secure fenced boat yard with monitored access and camera surveillance
- Sealed concrete yard with waste containment and drainage
- Water blaster hire
- Quickslips
- Power and water supplied
- Cradles and hardstand space for hire
- Sewage pump out
- Diesel refueling
- Waste oil and battery disposal

Enquiries and bookings to:

Seaview Marina Office

Telephone: 04 568 3736, Fax: 04-568 3586

Mobile: 0274 435 330, Email: alan@seaviewmarina.co.nz



Unit 3



Unit 6



Unit 2

ive hardstand and haul out facilities for commercial and pleasure craft in Wellington





Atomix boats are now here in Wellington available from Unit 9, Seaview Marina's Sea Centre.

Designed by world renowned Kiwi Superyacht designer Brett Bakewell-White with a deep V hull our boats are suited to New Zealand's tough coastal conditions.

Atomix Boats are manufactured in our purpose built factory based in Jin Hua China, using NZ sourced parts and fittings. All boat production, quality control and staff training is overseen and managed by our Kiwi boat builder, a tradesman with over 20 years experience in the industry. Our fiberglass hulls are produced using a process called 'Resin infusing'. This technology was developed for the Superyacht and racing boat industry. All our boats are built to CE standards and therefore both meet and exceed New Zealand's own CPC ratings.

With inflatable boats ranging in size from 2.2m through to 8.2m and both sports cuddy and hardtop fiberglass options we can cater for most boating choices. We have both mercury and Honda outboards available or you can talk to us about other options.

Atomix philosophy is 'affordable boating for all' and to achieve this we have chosen to sell direct to the public, therefore cutting out the middleman and passing on the savings.

The shop is run by Billy gist (ex powerboat Centre). He has been involved in the Wellington boating scene for a number of years now and brings with him over 25 years of power boating experience. Billy is especially keen to align Atomix Boats inflatables with Wellington's boating club scene and is working closely with Wellington Yachting Association and its members to achieve this.

With inflatable packages starting from just \$999.00 and hardtops from just \$59,995.00 on a tandem braked trailer with Mercury's Opti-Max outboards, you will be hard pressed to find a better deal.

Call Billy o 04-560 3500 or 021 245 6771 to discuss your next boat.



Bait and Tackle Shop – Open 7 days

Unit 11, 100 Port Rd, Seaview

Boat Fishing Seminar

7pm – 9pm, Tue 14th December - \$20pp

"The best fishing Spots in Wellington"

Bookings - Ph 04 5894325 or email shop@wellingtonfishingcharters.co.nz



- Launch Sales
- Yacht Sales
- Commercial Boat Sales
- Valuations
- Marine Insurance
- Marine Finance
- New Boat agencies
- Over 750 Yacht and Launch Listings Throughout NZ



12 Branches NZ Wide

View our listings at our Wellington office

Unit 10, The Sea Centre

Or Call Your Local Gulfgroup Marine Brokers

Buzz Falconer 027 4442037

Trevor Burgess 029 6200290

Bert Reeves 027 4606115

Office 04 5665240

e-mail wellington@gulfgroup.co.nz

www.gulfgroup.co.nz

Please Help Us keep our Trailer Parks Tidy

A recent clean-up inside Trailer Park A by marina staff yielded an entire waste bin full of rubbish. These photographs taken around the perimeter of Trailer Park B, show rubbish starting to accumulate there also. While our staff do their best to keep on top of rubbish around the marina, it is a big job and your help would be much appreciated.

To assist with this, we will be placing rubbish bins by the trailer park gates and would be grateful if all users of the parks tidy up regularly around your boat and place rubbish in the bins provided.



Sewage Management – Pump it Don't Dump It

Onboard sewage management is not a fun thing to think about but it is a necessary part of your boat's systems. Over the last few years there has been significant attention in the boating press about onboard heads, marine sanitation devices, portable toilets and the availability of onshore pump out stations.

Why should you care?

No one wants to think about settling down in the cockpit after putting the anchor down and glancing out on the water to see floating toilet paper go by. However, if boaties follow existing laws this won't occur. You can help take care of our harbours and other waterways by following the law and making sure that your boat's Marine Sanitation Device (MSD) is working.

What can you do?

- Understand the basics of boat pump out. Seaview Marina offers sewage pump out facilities at our dockway. If you are unsure about how to use our system please contact marina personnel for assistance.
- Don't let the waste accumulate in holding tanks for too long before pumping out. It may compact and be much harder to remove.
- When tied up to a dock or in the marina, use onshore facilities. Encourage guests to take advantage of the onshore ablution facilities before you set out for a day trip
- Regularly maintain your Marine Sanitation Device (MSD) and the attached plumbing and venting systems and install the best hose you can afford to reduce odours.
- Use enzyme deodorizers in holding tanks and portable toilets.
- Obey the law – discharge sewage away from coastal waters, marine reserves, marine farms and customary fishing reserves.
- Find out if you are in a boating No Discharge Zone.

As a general rule, to discharge sewage you must be more than:

- 500m from shore and in water over 5m deep
- 500m from a marine farm
- 500m from a customary fishing reserve
- 200m from a marine reserve

Marina Depths Revealed

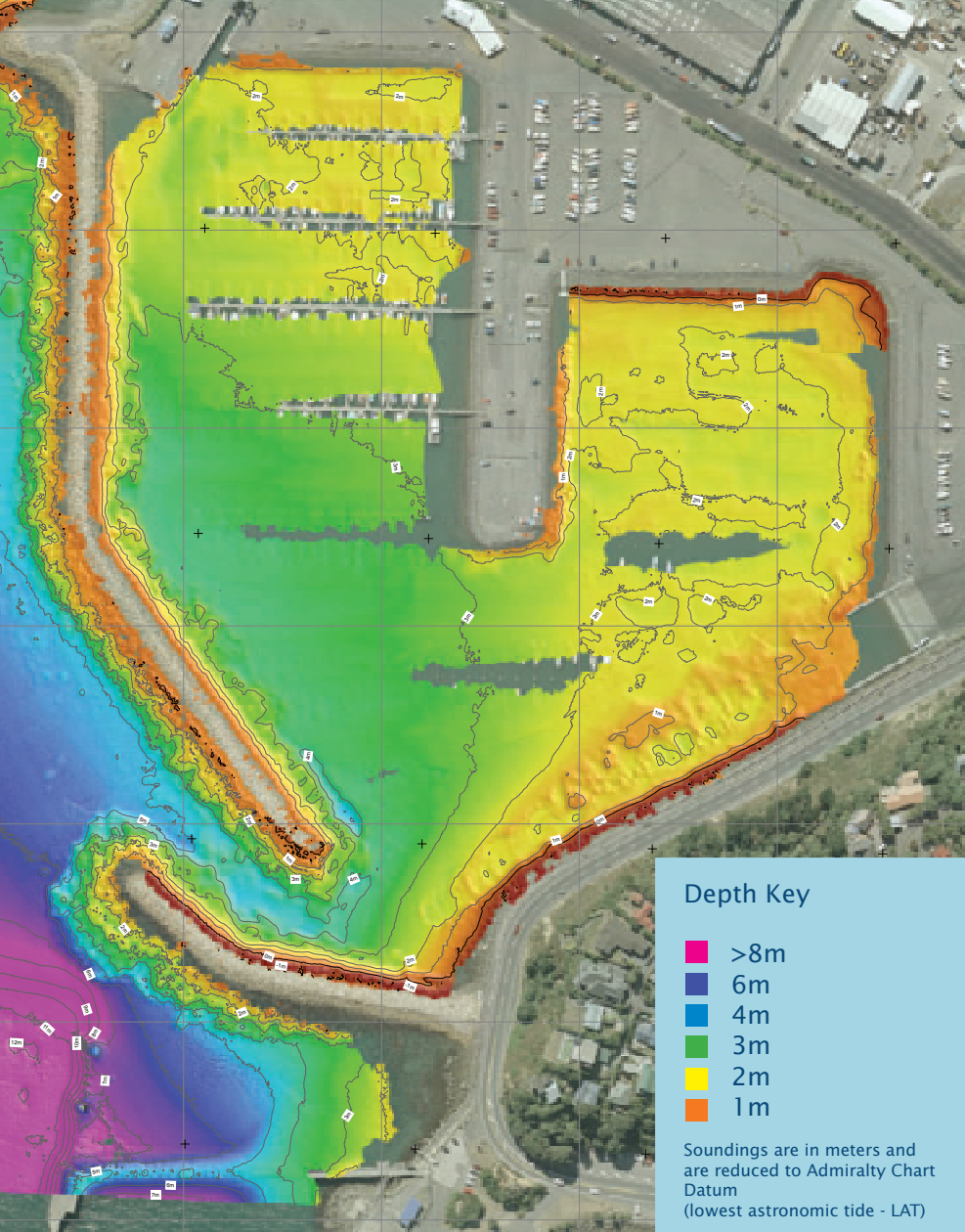
This detailed image of the Seaview Marina seafloor was produced in 2008 by the NIWA vessel RV Pelorus and gives an interesting insight into the depths within the marina in incredible digital detail.

Using a multibeam echo sounder system, NIWA calculates water depth using a fan of sound beams to build up a 3-D picture of the seafloor. Soundings are in metres and are reduced to Admiralty Chart datum (lowest astronomical tide – LAT).

Highly detailed maps showing the hidden seabed around New Zealand are now freely available on NIWA's website. They cover an area of 11.7 million square kilometers to depths of up to 11,000 metres. The maps are of benefit for all New Zealanders and users of the marine environment, revealing potential for fisheries, environmental management, conservation, hazard mitigation and energy and mineral opportunities.

To download maps go to <http://www.niwa.co.nz/our-science/oceans/bathymetry>

The above satellite imagery is provided by NIWA



Marina Charges Increase on 1 January 2011

We remind you that all marina berth rental charges will increase on 1 January 2011. This is the final instalment of the increase which was spread over twelve months starting with the first instalment on 1 July 2010.

We have also adjusted marina berth, trailer park and pole mooring charges to cover the increase in GST from 12.5% to 15% which came into effect on 1 October 2010.

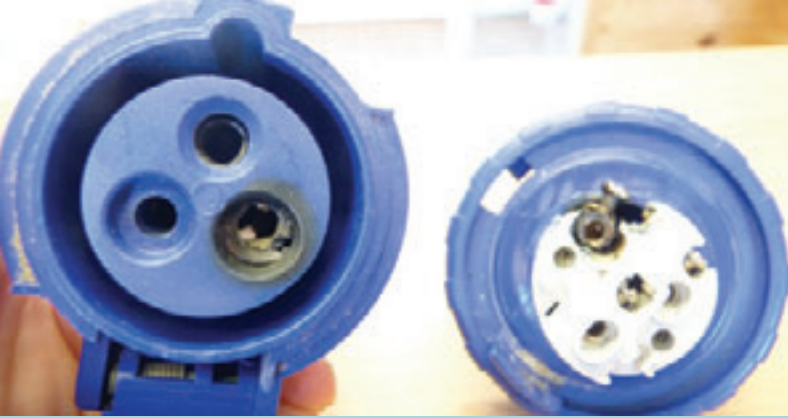
The table below shows you what the new annual and monthly automatic payment rates will be. (Please note the monthly automatic payment amounts have been rounded up to the nearest dollar)

Monthly Automatic Payment Rates From 1 January 2011*

	New Annual Rate	Monthly Rate from 1/1/2011
Trailer Park	\$1226	\$103
Pole Mooring	\$1226	\$103
10m berth	\$3189	\$316
12m berth	\$3945	\$329
14m berth	\$4660	\$389
16m berth	\$5315	\$443
18m berth	\$6634	\$553
20m berth	\$8176	\$682
Cat Berths(12-16m)	\$5110	\$426
Cat Berths(18-20m)	\$6600	\$550

*Please note, if you are paying by automatic payment your rental should be two months in advance. Therefore you will need to contact your bank to increase your monthly payments to cover the new license fee levels immediately.

Please contact Suzanne if you would like to set up an automatic payment, have any queries about the new charges or your account.



This faulty lead could have caused a boat fire at Seaview Marina

The owner of the lead pictured thought that as it was new, it was safe.

He plugged it into his shore power pedestal on A Pier and the next morning discovered the plug had burnt out, without tripping the RCD (Residual Current Device) on the pedestal. Initially it was thought there might be a fault with the RCD. However, on inspection by marina electricians it was discovered the lead had a poor connection and was faulty. This fault could have caused a boat fire.

The RCD on a shore power pedestal is designed to rapidly disconnect the electricity supply to a vessel should a fault to earth be detected, however if there is no earth fault, the RCD will not trip.

At Seaview Marina we take the issue of electrical safety very seriously. All shore power pedestals are checked and certified every six months and all notified electrical faults are serviced immediately.

We also rely on all berth holders who connect to shore power to do their part to minimize the risk to themselves and others.

How can you do your part to ensure your lead and power supply is safe?

- Any power lead you use must be tested and tagged annually as per AS/NZS3760. It should not exceed 25m in length and must not be coiled up when connected to the electrical supply. If your lead is not tested and tagged - don't use it.
- Always test your RCD every time you connect to shore power. To test, connect to shore power, switch on and press the Test Button. The RCD should trip off. If it does not trip, a dangerous condition may exist due to a fault.
- Every time you connect to shore power, take a good look at your lead and fittings. Look for signs of damage, corrosion or arcing of the connections.
- When connecting your plug and socket make sure the locking ring is always secured to ensure protection from the weather.
- Ensure your power lead is arranged so that it does not rub, chafe or crush against movement of a boat's fairleads, anchor or mooring cleats.
- Remember there are only sufficient power pedestals to connect one lead per boat to shore power. In consideration of others please only use one lead.

We will be mailing out a copy of the NZ Marina Operators Association brochure 'Shore Power Connections' to all berth holders with the December billing. This brochure tells you everything you need to know about connecting to shore power at Seaview Marina. If you would like to discuss any issues raised in this article or the brochure, or seek advice about your electrical system or connection please contact marina staff.

Security System Upgrade Completed

Last month we commenced an upgrade of our security access system. The upgrade was required because the existing software was difficult to use and with the addition of the Sea Centre we needed to add many more users to our system.



The upgrade is now complete and virtually the entire marina - the Sea Centre, marina piers, trailer parks and the ablution block - has been changed over to the new system. While the changeover, which involved the reissue of over 800 tags, did not go without a hitch, we are pleased to note the system is now working very well and the staff are fully trained in its use.

The new access tags (pictured) have now replaced your old tags. Should you not have received a replacement tag please contact Suzanne at the marina office. Additional tags can be purchased at a cost of \$20 each.

The new system has some great advantages over the old:

- You no longer need to use your tag to exit the marina piers, meaning if you forget your tag you can still get out. To exit, simply push the button on the box mounted on the left-hand railing on your pier bridge. Please note this does not apply to trailer parks.
- Marina staff can unlock gates remotely from the office.
- The access control data is integrated with the security cameras making the tracking of people onto the piers far simpler.

We thank all our customers for your patience and understanding during the changeover.



For all your marine and auto electrical requirements: batteries, alternators, starters, lights, LEDs

Stewart Knight
021 716 780

12 Waione Street, Petone Esplanade, 5012
PO Box 38-239, Wellington Mail Centre
p. 04 569 2886 f. 04 569 2887
info@auto-electrician.co.nz
www.auto-electrician.co.nz

SWANSON
RIGGING SERVICES LTD

Barry Swanson
Manager

Phone - Fax 388 7790 or 0275 660143

P.O. Box 14158, Wellington 6241

The Latest From Hakes Marine

It's not often that Hakes Marine can say that an owner turns up half an hour before launch having never seen his new yacht before but that is exactly what happened on 14th October. Richard Matthews, owner of the latest Oystercatcher XXXVIII arrived at Seaview Marina just as his new 54ft grand prix racing yacht was being positioned by the travelift. With the wind blowing and a few spots of rain falling, the 16th custom racing yacht built by Hakes Marine was launched.

The new Sea Centre facilities were the perfect setting for the launch of such a notable international racing yacht. Shed 3 was ideal for the last of the assembly of the boat and mast on the pristine clean concrete slabs. Even launching the boat with the new travelift meant the owner was in no doubt he was dealing with companies well suited to being on the world stage.

Beautifully built by the team from Hakes Marine, Oystercatcher XXVIII features full carbon pre-preg construction. With a varied race program, including Key West Race Week, The Caribbean 600, Cowes Week, The Fastnet and Middle Sea Races, Oystercatcher XXVIII has been designed with full offshore capability in mind. Central to the design is an hydraulically operated lifting keel allowing draft to be reduced from 3.65m to 2.5 metres.

The yacht was initially based at Seaview Marina, adjacent to the Hakes Marine facility, whilst undergoing sea trials and final preparation before its delivery sail to Tauranga for its export.

Of course as well as new builds, Hakes Marine has an impressive list of refits, repairs and repaints under its belt and with the establishment of an in-house metal fabrication workshop and a newly purchased CNC 3-axis Router their capabilities are impressive.

Latest projects have included a complete sandblast and repaint for the Wellington Volunteer Coastguard Naiad, new fly bridge for a 50ft Launch La Riva and a new fly bridge and repaint of Bloody Mary.

Hakes
marine
Wellington New Zealand



Oystercatcher XXVIII



The Hakes Team

Boat owners!

NIWA
Taihoro Nukurangi

Here's your chance to help us and win yourself an iPod:



To help NIWA better understand how antifouling chemicals might impact our marine environment we want to know how you're cleaning your boat.

All you have to do is answer a simple online survey that includes details about your boat, hull cleaning and antifoulant painting – and you're in the draw to win an Apple iPod Touch. It's as easy as that.

To answer the survey log on to: www.surveymonkey.com/s/antifoul

The results of the survey will be used to assist the Environmental Risk Management Authority (ERMA) in their planned reassessment of antifouling paints.

We will also send you a summary of the survey results.

- The online survey closes on the 21st of January 2011.
- All answers will remain anonymous.
- The winner of the iPod will be notified on the 24th of January by email.



NIWA – leading environmental science