

F and G Pier Construction to start in October

Total Floating Systems Ltd, the company contracted to complete construction of F and G Piers, has started casting the fingers which will be used to install the additional 43 x 10m berths on F and G Piers and the 6 x 18m and 6 x 14m catamaran berths on the south side of G Pier. We are now expecting their team down to install these berths early in October instead of August as earlier anticipated.

A small design change has been made to the original plan to widen the catamaran berths to allow easier access for these vessels. This means we have lost a couple of berths but it should provide a better facility. We expect to attract more catamarans to Seaview Marina with these new berths.

With the pile driving equipment established on site, we are also taking the opportunity to add a number of additional piles within the marina.

Seven large 450mm piles will be installed 10m out from the first 7 fingers on the south side of E Pier. They will provide added mooring security for these larger vessels.

A new pile will also be driven at the corner of the breakwater where it turns towards the dockway channel. We will establish a flashing white light on this pole to identify the toe of the breakwater. A couple of additional piles along the fairway towards the wharf will also be added.

As well as this, there are a couple of very small piles on E Pier which will be removed and replaced with more substantial ones. In addition, the missing finger on E Pier, which is presently positioned on the north side of G Pier, will be reinstated. This is the final repair job resulting from the June 2013 storm.



2014 Customer Survey Results update

In the last newsletter we advised we would be publishing detailed results of the 2014 Customer Survey for your information.

These results are still being collated and will be outlined in the next marina newsletter which is due out in November.

Inside

Stage 2 of the pedestrian walkway completed • marina maintenance update • trailer boat washdown area refurbished • Mean Bean coffee comes to Seaview Marina • boatyard news • ablution upgrade • marina webcam • historical marina images • diving in the marina • drysanding on the boatyard... and more

Mean Bean coffee van comes to Seaview Marina

We would like to introduce Susan and Raymond, owners of the Mean Bean coffee van. You may have already seen the van parked on Port Road during the week and at Seaview Marina on Saturdays and Sundays.

Raymond and Susan decided to start up a coffee van business because they both love coffee want to share this love of coffee with others. They did their barista training at Espresso Ninja in Wellington, who also service their machine.

Raymond and Susan use Karamu Coffee which is fair trade, organic and locally roasted at Point Howard Wharf. It has a lovely smooth creamy tasting texture, with a hint of chocolate. In addition to coffee they also serve homemade pies and muffins.

The Mean Bean van will be coming to Seaview Marina on Thursdays, Fridays and weekends and parking by the Lowry Bay Yacht Club.

Come along and try Raymond and Susan's coffee!



The Mean Bean Coffee van pictured on Port Road



**Unit 1, The Sea Centre
100 Port Road, Seaview,
Lower Hutt
WELLINGTON**

**Phil: 021 648 304
Ph: 04-568 8062,
Fax: 04-568 8072**

Straitmarine@straitmarine.co.nz
www.straitmarine.co.nz

Recognised member



**Authorised Dealers for:
Volvo Penta
Yanmar
Cummins Onan**



Marina maintenance update

Pier through-bolt replacement continues

An audit carried out in May 2011 suggested that a managed replacement regime was required on the through-bolts for piers A,B,C,D, and E. Enough bolts were ordered for the complete renewal of two piers, and we anticipated this work would be carried out over the next two years.



In August 2011, refurbishment of E Pier began. Although this work was started by marina staff, it was quickly realized that we did not have the resources to carry out the work efficiently.

Approximately half of the through-bolts on the E Pier walkway were replaced in what were considered to be the most needed areas, before the busy summer hardstand season required staff to be used elsewhere.

Staff gained valuable experience during this period and were better placed to understand the processes used. In July 2012, it was decided that we would replace the through-bolts on the other walkways, but only on either side of the concrete pontoons. This allowed us time to review potential contractors, with confidence in the integrity of the marina.

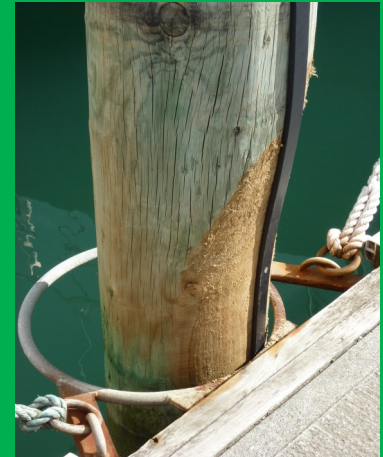
In 2013, after significant research and discussions with two other parties within the industry, we contracted out the full replacement of all the remaining through-bolts in the marina to Pete and Arend Lanser.

We are very happy with Pete and Arend's efforts and to date they have replaced through-bolts on A, D, and E Piers and work has commenced on C Pier.

An overview would suggest that all the through-bolts that need replacing will be done within the next 3 months.

The next stage in the refurbishment programme will find us replacing many of the angle brackets which hold the fingers to the walkways. It is anticipated that this work will be completed by the end of 2015.

Pile protection ongoing



Since 2009 part of the marina maintenance programme has been the protection of marina piles. This is achieved by placing plastic strips on poles showing wear.

As wear points caused by metal guide rings on poles can change, poles are continually monitored.

If you have concerns about a pole please contact :
Mike Croft, mobile: 0275 02288.



This friendly seal took an interest in the through-bolt maintenance team last week.

Follow us

follow us on
twitter

Visit us on
Facebook

You Tube™

Marina maintenance update

Mussel Growth on Piers



Customers occasionally ask us why the marina does not remove mussel growth off marina piers and fingers. In the past we used to regularly scrape mussels off pontoons as part of our ongoing maintenance programme. However, a number of years ago this practice was discontinued after we were advised that this growth is best left alone.

Bellingham Marine, one of the largest marina construction companies in the world advised us that mussel growth on pier structures is actually a good thing. It helps promote marine life, which enhances water quality within the marina. In addition, the mussel population cannot sustain unlimited growth, so is in effect self-limiting. Continual scraping of marina fingers is bad for the surface of them and is time-consuming as growth quickly reestablishes itself.

We have also been asked if mussel growth and marine life transfer to vessel hulls from marina piers. The simple answer is no. Regular antifouling of your vessel is the best protection against marine growth on your hull.

Upgrade to trailer boat facilities completed

We are pleased to advise the resealing of the wash down area used by trailer boat customers has been completed and trailer park gate access readers have been moved to the driver's side of the vehicle. These improvements have made a significant difference to the facility we offer and we have had excellent feedback about the upgrades.

Diving in the marina—please observe these rules



Diving in marinas is hazardous. Variable water quality, low visibility, the presence of bacterial growths and marine pollutants, hanging boat lines, plus the very real possibility of getting run over by a fellow boater are all dangers faced by those diving in a marina. In addition, in-water hull cleaning has a negative effect on water quality. Divers should never be hired to clean a hull painted in ablative antifouling and any vessel which is heavily fouled should not be cleaned in its berth.

Seaview Marina supports the NZ Clean Boating Programme and has gone to considerable expense to provide safe alternatives to underwater hull cleaning and containment of antifouling and marine growth on the boat yard.

In the light of this we are asking that all divers please comply with the following requirements:

1. Register with the marina office prior to entering the water.
2. The diver must hold the appropriate certification.
3. Liability insurance must be proven to be in place.
4. A safety plan, including three people present, must be in force. No diver will work alone.
5. A copy of the companies Health and Safety policy including evacuation procedure is to be provided and to be checked and signed by the marina.

Unfortunately, if the above rules are not followed, then diving will not be permitted within the marina.

For more information please contact
Mark Cousins: 0274 102 196

Boat yard news



Container Workshop Reopens

The container workshop on the boatyard has recently been upgraded by staff and is now ready for customer use. It is fitted out with a workbench equipped with lighting, a vice and drill press. For access please talk to one of the yard staff.



Dry Sanding on the Boatyard — the Introduction of Best Management Practice

Maintenance activities on boatyards are recognized as potential sources of a wide range of pollutants that may enter the environment. Marina staff have been working towards implementing a number of Best Management Practices on the boatyard to minimise the effects on the environment and where possible, stop pollution at the source.



One such area where we will be encouraging customers to make a difference is in the sanding of vessel hulls.

Removing bottom paint and antifouling by wet or dry sanding produces a sanding dust containing potentially hazardous metals (principally copper). In addition, this

dust also poses a risk of damage to grp gelcoat finishes. A number of respondents in the 2014 Customer Survey, with vessels on piers close to the boatyard, also expressed concerns about sanding dust emanating from the yard.

Because of the significant health and environmental risks associated with dry sanding of antifoul and the risk of damage to vessels, we will no longer be allowing dry sanding of vessels on the boatyard without the use of a vacuum assisted sander. In order to give you time to prepare for this change, it will not come into effect until 1 December 2014.

Scraping of antifouling is still possible but the following methods must be used to minimize the amount of pollutants that are able to enter the surrounding water or air.

- Regularly sweep or vacuum the work area and collect and dispose of the waste properly. Use the waste bins provided on the boatyard.
- Clean up any debris from your site prior to departure, paying particular attention to items which may become windblown or damage the travelift tyres.

Everyone working on the boatyard has a personal responsibility to ensure appropriate measures are taken to minimize these adverse effects at all times and your co-operation with our Best Management Practices is appreciated.

If you have any queries about these changes please contact: Mike Croft, phone: 0275 022 888.

Have you changed your monthly automatic payment?

Thank you to all those customers who changed your monthly automatic payment to the new rate from 1 July. For those who haven't yet adjusted your payment we have reprinted the table of charges to assist you.

Please also ensure your payment date is changed to the first of the month, so your rental is always one month in advance.

If you are paying your rental by direct debit, no action is required, the correct charge will be automatically debited from your account on the first of each month.

If you have any queries about new charges or your account, please do not hesitate to contact Suzanne or Alison:

P: 04 568-3736

E: accounts@seaviewmarina.co.nz.

	Annual Charges from 1 July 2014	Monthly charge from 1 July 2014
Berth size	Annual Fee	Monthly fee
10m	\$3,516	\$293.00
12m	\$4,348	\$362.33
14m	\$5,136	\$428.00
16m	\$5,858	\$488.16
18m	\$7,311	\$609.25
Catamaran (12m-16m)	\$5,632	\$469.33
Catamaran (16m-20m)	\$6,612	\$551.00
Pole Mooring	\$1,312	\$109.33
Trailer Park	\$1,312	\$109.33

Pencarrow Light Notice

Greater Wellington Regional Council Harbours advise that the intensified sector of Pencarrow light that shines to the west has been disconnected. A Notice to Mariners has been issued about this.

The intensified light provided additional range to the red/white sector boundary that is visible to the south of Sinclair Head when crossing the straits towards Wellington.

This does not affect the sectors shown on the chart, only the range in the intensified part. There will shortly be a change to the main light (no change to the characteristics or sectors) and it is hoped that this will be clearly visible past Sinclair Head.

Greater Wellington Regional Council would like feedback from anyone as to the effectiveness and usefulness for approaching Wellington from the west. If the new arrangement is significantly falling short of the previous light they will look at options for making improvements. They can be contacted on: 04 3845708.



NO SMOKING PLEASE

Please note that smoking is not permitted inside any marina buildings including; toilets, showers, the marina office or Sea Centre.

Thank you for your co-operation.



Wellington Messabout Group

The smaller the boat the bigger the adventure

www.wellingtonmessaboutgroup.weebly.com

The Wellington Messabout Group is a bunch of like minded small boat enthusiasts who get together to sail, row, build and share their passion for small boats. We have regular "messa-bout" sailing gatherings as well as other social events.



We are not a sailing club or into racing, the Wellington Messabout Group is more recreational sailing, picnic lunches and low stress. Generally members boats are trailerable boats with a classic or traditional origin between 8 to 20 feet and often home built.

Contact details:

Log onto our website at:

www.wellingtonmessaboutgroup.weebly.com

for lots on information and details of the next Messabout get together or phone Vincent Drane on mob. 0211 597932



Russell Smith

Boat Builder

Maintenance and Repairs
Custom woodwork & Fitouts

Ph: 021 210 5157

russellsmith1946@gmail.com



We will be running 2 hour Evening Fishing Seminars from our Seaview shop during August and September

Time: 7.30 - 9.30pm Friday nights.
Live music from 6.45pm.
Seafood cooking and fishing info.

Cost: \$20 per person, per night or 5 nights for \$80.

Seminars cover

Spots (where to fish), techniques, fishing gear, bait and berley, electronic gear, boat handling, cooking and fish preparation, knot tying and rigs.

August 2014

29th - Seafood cooking and fish smoking

September 2014

5th - Rock fishing

12th - Catching kingfish

19th - Harbour fishing

Pete Lamb shop

Unit 11,

Seaview Marina Sea Centre

100 Port Rd Lower Hutt

Ph: 04 5894326



Check out local weather conditions at the Seaview Marina weather station and view them live on our webcam

Want to go boating but aren't sure what the current weather conditions are on the harbour? Now you can leave out the guess work and get live weather information from Seaview Marina's own weather station.

To access the weather station go to the marina website homepage at www.seaviewmarina.co.nz. On the menu bar at the top of the page click on 'Live Weather Station'. From here you can view live temperature and wind information plus weather history for the Seaview area. You can also access our marina webcam.

An image from the Seaview Marina webcam



The marina webcam is mounted on top of the marina office and looks directly east, giving a great view of the harbour conditions.

The webcam image changes every five minutes.

Shower facilities upgraded



New timber benches have been installed in all shower cubicles in the ablution block to replace the plastic chairs. Customers now have a handy shelf to keep clothing and other items off the floor while they shower. In addition, a shower curtain has been placed in the disabled shower (pictured) to keep the toilet and new seat bench dry.



Seaview Branch

100 Port Road, Seaview Marina
 P: 04 586 6955
 Monday to Friday 8:30am to 5:30pm
 Saturday and Sunday 8:30am to 5:00pm

PAINT & MAINTENANCE

YACHT FITTINGS

CLOTHING



CORDAGE

SAFETY

LIFEJACKETS



Walkway Stage 2 Completed

Construction of Stage 2 of the pathway linking the marina office and ablution block with the eastern piers and E Pier toilet facilities



is now almost completed. Only a few small finishing jobs are left to be done when we have a spell of dry weather.

Marina customers and members of the public are making good use of the walkway, and the seat and wooden platform between F and G Piers is also proving a popular lunch stop.



The next stage of the landscape development will involve concreting the remaining dinghy launching ramp to improve launching for pole mooring customers. The area around the E Pier toilet/shower facility will also be tidied up.

S Seaview Sails & Rigging

**We are moving from
Seaview Marina to
7 Freshfields Place, Plimmerton**

- 1 September 2014 is our first day of operation in Plimmerton
- Drop-off service available at Burnsco (please bring sails, clean and dry)
- We will continue to service Seaview Marina
- New Phone number 233 6568
- New Sails
- Sail Repairs and re-cuts, pickup service available
- Standing and Running Rigging
- Canvas for boat and home



**Until 31 August 2014 you can contact us on
04 566 7788 or info@seaviewsails.co.nz**

Storage of dinghies and kayaks in marina berths

We acknowledge that it is convenient to store a dinghy or kayak alongside your vessel in your marina berth. However small boats stored in this way can come free and damage other boats or fill with rain and potentially sink.

We provide a number of racks (opposite E Pier) for pole mooring customers to store their tender, free of charge. Any spare spaces are available for other customers to use. If the racks are full we ask that your tender or kayak be either stored securely on your vessel or taken home, at your earliest convenience.

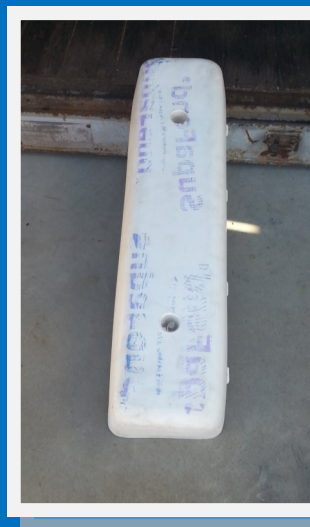
If you store your vessel on the dinghy rack please tie it down well and clearly label it with your name or the name of your vessel.

If you require advice from our staff or wish to discuss this further please do not hesitate to call Mike Croft: 0275 022 888.

We thank you for your co-operation.

Fenders for sale

We have a number of fenders for sale which are in good, as-new condition.



The fenders are \$35.00 each.

To enquire, or to view the fenders please contact the marina office:
Phone:
04 562 8228



Oxidised gel coat of an 8 year old fibre glass boat.



Finished product after a coat of Nano clear MR2.

“SO IT’S NOT ONLY LOOKING GOOD, BUT SAVING ME MONEY IN FUEL AS WELL!”



609HT Stabi Craft recently completed

LOOKING AFTER YOUR PRIZED POSSESSIONS JUST GOT EASIER

As NZ boat owners we spend as much time cleaning, cutting and polishing our boats as we do out on the water enjoying our favourite water activities.

Protective clear coating NZ has the answer. Our experienced applicators will use our range of Nano Clear coating products and systems to provide a long lasting protective clear coating to your vessel.

We can take a boat with oxidised gel coat or stained aluminium, clean it back using Nano Pre-Clean to prepare the surface. Finally we apply a coat of Nano Clear LR1 or MR2. This final stage leaves a glossy finish for years to come, offering increased surface hardness and UV resistance.



Before



After

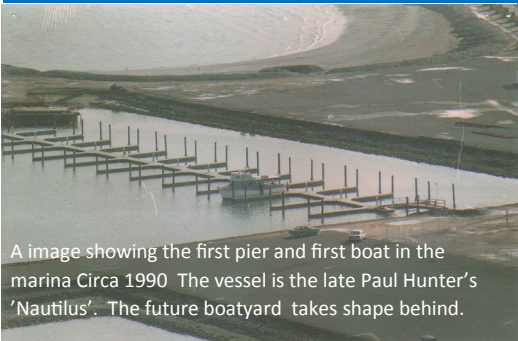
P 021 511 695
 E service@protectiveclearcoating.co.nz
www.nanoclear.co.nz

PROTECTIVE CLEAR COATING NZ
 PROTECTING YOUR INVESTMENT

Before and after—the growth of Seaview Marina

It's easy to forget how much the marina has grown over the years. A recent hunt through historical photos unearthed some images which illustrate some of the changes that have taken place since it first opened in the early 1990s.

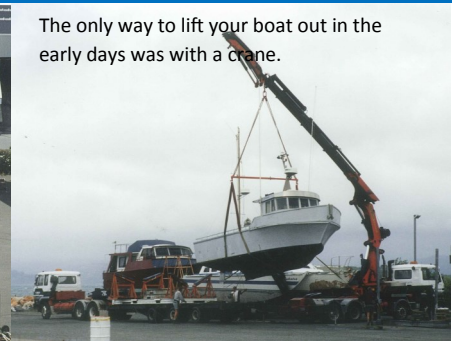
The early years



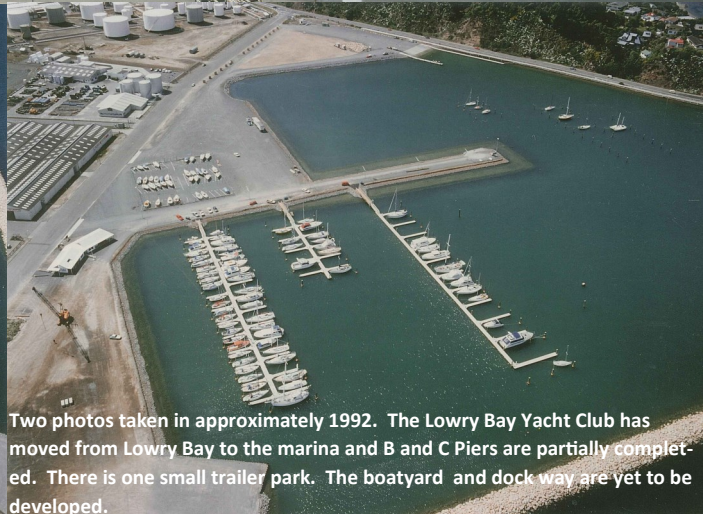
A image showing the first pier and first boat in the marina Circa 1990 The vessel is the late Paul Hunter's 'Nautilus'. The future boatyard takes shape behind.



The 'Green Shed' (circled) was the first marina office and doubled as lunchroom, boatyard office and ablution facility.



The only way to lift your boat out in the early days was with a crane.



Two photos taken in approximately 1992. The Lowry Bay Yacht Club has moved from Lowry Bay to the marina and B and C Piers are partially completed. There is one small trailer park. The boatyard and dock way are yet to be developed.

Seaview Marina today



Seaview Marina 2014



The boatyard and Sea Centre 2013.

New rubbish and recycling facilities working well

The newly installed container rubbish/recycling stations are working very well. We have noticed customers are taking much more care in sorting rubbish and daily emptying of bins is keeping volumes down.



The smaller rubbish/recycling station opposite D Pier.

The system also seems to have reduced the problem of rubbish being dumped by members of the public.

Another positive is that the cost of this new system has proved to be the same as that for the large front bins.

New Zealand's

clean boating
programme



Seaview Marina Hours & Contact Details

Office Hours 8am-5pm, Monday to Friday
8:30am-12 noon, Saturday
Boat Yard Hours 8am-5pm, Monday to Saturday
Office Phone: 04-5683736 **Fax:** 04 5683586

STAFF

Manager:

Alan McLellan M: 027 443 5330
E: alan@seaviewmarina.co.nz

Marina Administrator:

Suzanne Willis M: 0275 995 857
E: suzanne@seaviewmarina.co.nz

Assistant Administrator:

Alison Watt M: 021 449 845
E: alison@seaviewmarina.co.nz

Boat Yard Supervisor:

Mike Croft M: 0275 022 888
E: mike@seaviewmarina.co.nz

Maintenance Dockhands:

Mark Cousins M: 0274 102 196
E: mark@seaviewmarina.co.nz

www.seaviewmarina.co.nz

Stick to
the

knot rule

Please stick to
the 5 Knot speed
limit within the
marina.

Make no
Wake!

