

## F and G Pier Redevelopment in full swing

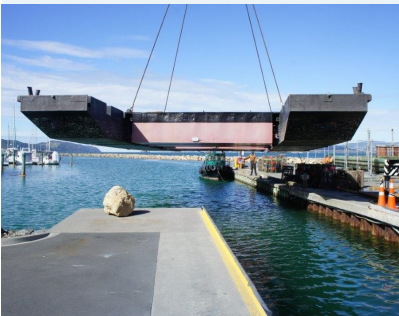
The redevelopment of F and G piers is now well underway. Total Marine Services, the company contracted to undertake the construction, started work on 13 November.

Their first few days on site were spent assembling the piling barge from the seven sections that had been unloaded on the hardstand. The assembled barge measured 20m x 15m and was craned into the water by Titan Cranes.

The driving rig was then attached and by the first weekend they were ready to start work.

Total Marine Services have been on site for about three weeks and already the new berth structure is taking shape. After initially spending time pulling out the old pole mooring piles the team then got into driving the piles for the breakwater pier (H).

This was a very inspired process as they unhooked G pier from its piles and used the pontoons and pile guides to locate the positions for H pier's piles. The photo (below centre) shows this job being done.



**The Seaview Marina Board, management and staff wish all our customers a very Merry Christmas and Happy New Year. We look forward to being of service to you all in 2015.**

*Inside*

*Seaview Marina Christmas and New Year hours • Free membership offer from Lowry Bay Yacht Club • Sailability regatta • Sad news for coffee lovers • boatyard news • defibrillator on site • and more ....*

Once Total Marine had repositioned G pier again in its proper location they began craning the long fingers for the catamaran berths into the water and locating them on the south side of G pier. It only took a couple of days before all these were in place and the finger and intermediate piles were being driven.

We have ended up with four 18m catamaran berths, eight 14m catamaran berths and one 25m mono-hull berth.

Four vessels had to be moved to other berths in the marina to allow the piles on the south side of F Pier to be pulled out so new 10m berths could replace them.

Our thanks go to all these owners for their co-operation and understanding during this process. We are confident that the new catamaran berths, with their own fingers, will provide a much better facility for this group of owners.

It is unlikely the work will be totally completed before Christmas but certainly by the end of January 2015 we will have an additional 43 x 10m berths and the 13 new catamaran berths.

## Don't leave shore without one



Wellington Regional Navigation and Safety Bylaws require you to carry lifejackets of appropriate sizes for everyone on board your boat. (bylaw 2.1)

 **greater WELLINGTON** Harbours  
REGIONAL COUNCIL

0800-0-0076

## Sad News for Coffee Lovers

Many marina customers had become loyal patrons of the Mean Bean coffee van and are missing their daily shot of coffee.

Unfortunately ill health has forced Raymond and Susan to shut down their coffee van business at Seaview Marina.



**Follow us**

follow us on  
**twitter**

 Visit us on  
**Facebook**

**You Tube**™



## CHRISTMAS & NEW YEAR OFFICE & BOAT YARD HOURS

The marina office will be closed on the following days over the Christmas and New Year period:

**Thursday 25 — Friday 26 December 2014 inclusive**  
**Thursday 1 — Friday 2 January 2015 inclusive**

The boatyard will be closed on the above days and also on:

**Saturday 27 December 2014**  
**and**  
**Saturday 3 January 2015**

At all other times the marina office and boatyard will be open for business as usual.

In the event of an emergency during this period please contact Alan McLellan mob: 0274435330.



## Sailability Regatta 2015

Many marina berth holders will know that there's an exodus over the holiday season of yachts and launches to the Marlborough Sounds, - and that's as it should be.

During this period, from the 16<sup>th</sup> to the 19<sup>th</sup> of January 2015, the national sailing regatta for people with disabilities is taking place. Seaview Marina will be our launching and mooring point and racing will be held in the adjacent part of Wellington harbour, between Matiu Somes Island and the breakwater including the mouth of the Hutt River.

We hope to have around forty yachts from all over the country participating in the regatta. These will include the Hansa 303's that currently sail in the marina on Tuesdays and Wednesdays, the one person Liberty Class Yachts and the 18 foot SKUDS which are the Paralympic two person yacht.



There will be around 70 sailors, each with their support crew of one or two. On top of that, a regatta such as this will involve about 50 volunteers both on and off the water. If you wish to help, please phone the Regatta Director, Don Manning on mobile: 0272 494 275.

This regatta is being organised by Lowry Bay Yacht Club in conjunction with Sailability Wellington Trust, who were the recent winners of the Regional Airport Award for Sport and Leisure. All the hospitality around the event will be based around Lowry Bay Yacht Club.

We look forward to your support for this event, your cooperation with our navigational needs and your company, should you wish to join us.





## Lowry Bay Yacht Club - FREE MEMBERSHIP offer to marina customers



The Lowry Bay Yacht Club is offering free membership to Marina clients who have not been members of the Club before. This is a one-off offer and the memberships will last until the end of January 2015.

This offer gives you a chance to try out the Club without any cost, and we hope that most of you taking up the offer will choose to stay on after January, especially as memberships start at only \$130 per year.

To take up the free offer contact the Club Commodore, Gareth at [commodore@lbyc.org.nz](mailto:commodore@lbyc.org.nz).



### Lowry Bay Yacht Club expands cruising programme

While most people will have seen lines of yachts heading out to race on Friday nights and Sunday afternoons, not everyone knows that the Lowry Bay Yacht Club also caters for boaties who enjoy cruising and fishing.

An expanded cruising programme will now see at least one dedicated cruising event each month and often more. Cruises during long weekends and Christmas usually involve a Cook Strait crossing, while events during other weekends will include a raft-up in the harbour or end in the Clubhouse bar. Cruises suit power and sail, including those who want to sail as a group without racing. For more information about cruising and fishing events contact the Cruising Captain, Olivia, at [cruising-capt@lbyc.org.nz](mailto:cruising-capt@lbyc.org.nz).



### The Clubhouse

The Clubhouse bar is open Friday nights, Sunday afternoons (following yacht races) and most Saturday afternoons. Meals are available on Friday evenings and snack food at other times.



The bar is the social centre of the Club for members, including hosting events such as quiz evenings, technical evenings (covering a wide range of boating related topics) and movies.

The 'A Pier band' can also often be found there on a Friday night. People are always welcome to pop in, meet the members and see if joining the Club is right for them.

The Clubhouse is available to rent for events such as birthdays and weddings at reasonable rates and even hosts a church service on Sunday mornings. If you are interested in hiring the Clubhouse get in touch with the Office Manager, Marg, at [info@lbyc.org.nz](mailto:info@lbyc.org.nz).

### Spring Chickens take care of maintenance

If you've been in the marina on a Thursday morning it's likely that you will have seen the 'Spring Chickens' at work at the Clubhouse. They are a group of members who have undertaken a complete refresh of the building while still finding time for morning tea and socialising.

**Assistance with boating questions**

Occasionally the marina staff get questions from people about using their boats and the harbour, especially if they are new to boating. The club's members have a wealth of knowledge and are happy to help with questions people have, including meeting them on their boat. You can get in touch with the Club Commodore, Gareth at commodore@lbyc.org.nz.

**Always Wanted to have a go at yacht racing?**

The club has plenty of yacht owners wanting to share their love of yacht racing and hopefully to pick up some extra crew members in the process. They would be happy to take you out for the experience and, if you enjoy it, there are yachts looking for a regular crew. If you have friends who are interested in having a go bring them along too.



If you have got your own yacht you'd like to race, but aren't sure how races are run, a Club member may be available to help you race your own boat.

The club provides a wide variety of racing catering for the very competitive to those with a more relaxed approach. To get involved, pop down to the club on a Friday at around 5:30pm or get in touch with the Vice Commodore, Brent at vicecomm@lbyc.org.nz. You can also check out the racing programme on the club website.

**What's on at Lowry Bay Yacht Club over Summer**

- 14 December:** Harbour cruising event (check web site for details closer to the day)
- Christmas/New Year** Torrent Bay cruise. Travel with other boats if you want. Raft up at Torrent Bay on New Years Eve for activities and Tally's fireworks display.
- 17 – 19 January:** Sailability international regatta
- Friday 23 January:** Pursuit yacht race, 6.15pm start
- Sunday 25 January:** Opening Day celebration followed by race, from 11.30am
- Saturday 31 January:** Boat Rally mystery steps, questions and boat handling tasks to be undertaken before returning to the bar. 1.00pm start
- Bar hours:** Friday evenings from 5.30pm to 10.30pm (meals available). Saturdays 4:00pm to 6.00pm (except 13 December) Sundays approximately 4.00pm to 7.00pm.

Keep up to date with events on our website: [www.lbyc.org.nz](http://www.lbyc.org.nz)



**Unit 1, The Sea Centre  
100 Port Road, Seaview,  
Lower Hutt  
WELLINGTON**

**Phil: 021 648 304  
Ph: 04-568 8062,  
Fax: 04-568 8072  
[Straitmarine@straitmarine.co.nz](mailto:Straitmarine@straitmarine.co.nz)  
[www.straitmarine.co.nz](http://www.straitmarine.co.nz)**



**Authorised Dealers for:**

**Volvo Penta  
Yanmar  
Cummins Onan**



## Boatyard News

### Dry Sanding on the Boatyard - a reminder about new rules

Removing bottom paint and antifouling by wet or dry sanding produces a sanding dust containing potentially hazardous metals (principally copper). In addition, this dust also poses a risk of damage to grp gelcoat finishes.

**We noted in the last newsletter that because of the significant health and environmental risks associated with dry sanding of antifoul and the risk of damage to vessels, dry sanding of vessels on the boatyard without the use of a vacuum assisted sander would not be allowed. This change came into effect on 1 December 2014.**

Scraping of antifouling is still possible but the following methods must be used to minimize the amount of pollutants that are able to enter the surrounding water or air.

- Regularly sweep or vacuum the work area and collect and dispose of the waste properly. Use the waste bins provided on the boatyard.
- Clean up any debris from your site prior to departure, paying particular attention to items which may become windblown or damage the travelift tyres.

Your co-operation with our Best Management Practices is appreciated.

**If you have any queries about these changes please contact: Mike Croft, phone: 0275 022 888.**



### The Busy Season is Here! Book now to avoid disappointment!

As expected at this time of year, the boatyard is filling up fast and we anticipate a very busy summer.

If you are planning to lift out before Christmas or over the summer period you may want to put your name on the waiting list for a cradle soon to avoid disappointment.



Contact Suzanne or Alison in the marina office to make your booking, phone: 04 568-3736.



#### Your one-stop shop for

- Fishing Charters
- Fishing tackle sales
- Instructional fishing classes
- Instore seminars
- Fishing reports

All based at Seaview Marina:

Pete Lamb shop

Unit 11, Seaview Marina Sea Centre

100 Port Rd Lower Hutt

Ph: 04 5894326

#### Shop hours:

Monday to Friday 8:30am-5:30pm

Saturday and Sunday 7am-4pm (summer hours)

## Defibrillators Save Lives

This information could save your life, or that of a fellow boatie—we have a defibrillator on site in the marina office.



A defibrillator is a life-saving machine that delivers an electrical stimulus to the heart to re-start or stabilise heart function.

All marina staff are fully trained in the use of our defibrillator but without any training a by-stander can use them effectively. Our defibrillator has full instructions with it.

## CHRISTMAS DAY AT LOWRY BAY YACHT CLUB with Gillian, Sharon and Marg



Let's get together on Christmas Day for Christmas lunch at the club – from midday to ~~~~! Main course provided, pot luck nibbles and/or dessert  
\$10.00 per person – bookings essential, (sorry no walk-ins)  
Please reply to [info@lbyc.org.nz](mailto:info@lbyc.org.nz) by 12 Dec 2014.  
Margaret Lissette the Club Manager



### Seaview Branch

100 Port Road, Seaview Marina  
P: 04 586 6955  
Monday to Friday 8:30am to 5:30pm  
Saturday and Sunday 8:30am to 5:00pm



PAINT & MAINTENANCE



YACHT FITTINGS



CLOTHING



CORDAGE



SAFETY



LIFEJACKETS





## Wellington Messabout Group

*The smaller the boat the bigger the adventure*

[www.wellingtonmessaboutgroup.weebly.com](http://www.wellingtonmessaboutgroup.weebly.com)

The Wellington Messabout Group is a bunch of like minded small boat enthusiasts who get together to sail, row, build and share their passion for small boats. We have regular "messabout" sailing gatherings as well as other social events.



We are not a sailing club or into racing, the Wellington Messabout Group is more recreational sailing, picnic lunches and low stress. Generally members boats are trailerable boats with a classic or traditional origin between 8 to 20 feet and often home built.

### Contact details:

Log onto our website at:

[www.wellingtonmessaboutgroup.weebly.com](http://www.wellingtonmessaboutgroup.weebly.com)

for lots on information and details of the next Messabout get together or phone Vincent Drane on mob. 0211 597932



Stick to  
the



knot rule

Please stick to  
the 5 Knot speed  
limit within the  
marina.

Make no  
Wake!

New Zealand's



# clean boating

programme



### Seaview Marina Hours & Contact Details

**Office Hours** 8am-5pm, Monday to Friday  
8:30am-12 noon, Saturday

**Boat Yard Hours** 8am-5pm, Monday to Saturday

**Office Phone:** 04-5683736 **Fax:** 04 5683586

#### STAFF

##### Manager:

Alan McLellan M: 027 443 5330  
E: [alan@seaviewmarina.co.nz](mailto:alan@seaviewmarina.co.nz)

##### Marina Administrator:

Suzanne Willis M: 0275 995 857  
E: [suzanne@seaviewmarina.co.nz](mailto:suzanne@seaviewmarina.co.nz)

##### Assistant Administrator:

Alison Watt M: 021 449 845  
E: [alison@seaviewmarina.co.nz](mailto:alison@seaviewmarina.co.nz)

##### Boat Yard Supervisor:

Mike Croft M: 0275 022 888  
E: [mike@seaviewmarina.co.nz](mailto:mike@seaviewmarina.co.nz)

##### Maintenance Dockhands:

Mark Cousins M: 0274 102 196  
E: [mark@seaviewmarina.co.nz](mailto:mark@seaviewmarina.co.nz)

Jonathan Udy E: [jonathan@seaviewmarina.co.nz](mailto:jonathan@seaviewmarina.co.nz)

[www.seaviewmarina.co.nz](http://www.seaviewmarina.co.nz)

