

F and G Pier Redevelopment Completed

Available Now - 10m and catamaran berths

We are pleased to announce the completion of our latest pier construction project - the redevelopment of F and G Piers and with it the addition of **44 new 10m berths and 12 catamaran berths.**

All but 7 of the 10m berths were leased off the plan, as were 8 of the catamaran berths.

Spaces are limited, so if you are interested in enquiring about or leasing a 10m or catamaran berth please contact the marina office today on phone: 04 568-3736.



Inside

F and G Pier development completed • new pier gatehouses • environmental update • pre-winter boat checks • contractor health and safety • Lowry Bay Yacht Club events • and more



New Gatehouses for F and G Pier

To date our F Pier customers have been the only group to have an enclosed gatehouse at their pier entrance to provide shelter and protection.

We have had so many favourable comments from them about the gatehouse that it was decided to include a similar structure on the new G Pier gate. The new gatehouse has been clad in cedar T and G and the F pier gate modified to match. Over time we hope to be able to place gatehouses on all piers.

In the interim the gates to piers A-E are being cleaned up. Old rusty iron, fittings and noticeboards have been removed and new pier signs will be installed soon.

PERCE HARPHAM



Some Voyages

Around New Zealand & Elsewhere

We have three copies of Perce Harpham's book 'Some Voyages' for sale in the marina office for \$20 each.



**Unit 1, The Sea Centre
100 Port Road, Seaview,
Lower Hutt
WELLINGTON**

Phil: 021 648 304

Ph: 04-568 8062,

Fax: 04-568 8072

Straitmarine@straitmarine.co.nz

www.straitmarine.co.nz

Recognised member



Authorised Dealers for:

**Volvo Penta
Yanmar
Cummins Onan**



What's on at Lowry Bay Yacht Club (located Seaview Marina)

Week to Sunday 26 April

Bar hours

Friday 5.00pm to 10.00pm, meals from the restaurant
Saturday 4.00pm to 6.00pm

Events

Anzac weekend – Marlborough Sounds cruise

Register now for a cruise to Lochmara (bad weather alternative to Queens Wharf)



Note: yacht racing resumes Sunday 3 May with a Two-handed Series in the morning and Sprint Racing in the afternoon.

New members and visitors welcome

Lowry Bay Yacht Club offers:

Cruising – power and sail.

Yacht racing.

Bar and food.

Shore based fun and friendly members.

Venue hire for business events and special occasions.

Membership is from just \$140 p.a. (that's less than \$3 per week).

Contact us

Website: www.lbyc.org.nz Email: info@lbyc.org.nz Phone: 568-3715 Visit: next to Gate 2



Environmental Update

We think this is Rubbish!

It is really disappointing to see how some people are treating our new rubbish facilities. The images here show why—we are finding bags of rubbish dumped beside bins, bins filled to overflowing rather than rubbish being taken to the other container, non-recyclables put in the recycling bins and items that are clearly too large for any bin being left in the containers for us to dispose of.

Please note—The bins are for boat rubbish only and should not be used for home rubbish, building materials or fish waste. If your rubbish doesn't fit in a bin it is your responsibility to dispose of it off-site.

The marina—and that means you the marina user—pays an additional charge for every bin that is contaminated with rubbish that shouldn't be in it. So, each time you put a piece of wood or a bag of food scraps in a recycling bin we pay extra. If the cardboard bin has polystyrene or plastic in it we pay extra. If you put rubbish beside the bin the waste truck does not take it away—our staff have to.

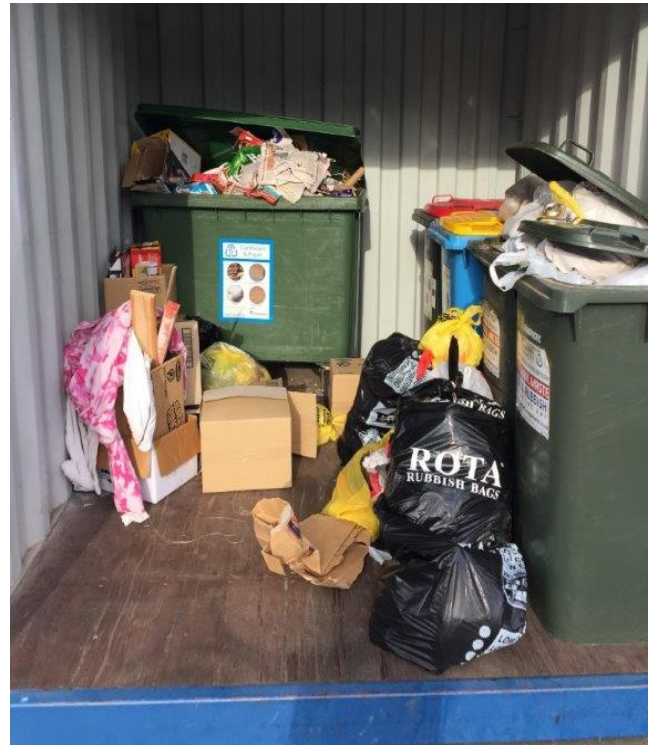
Please consider other users and help us to keep the rubbish stations clean by —

- **Sorting your rubbish**
- **Putting recyclables into the correct bin**
- **Flattening cardboard**
- **Not overfilling bins**
- **Taking large items home or to the transfer station**

Progress made in Finding the Source of the Ablution Block Odour

Users of the ablution block have complained of an offensive odour coming from the floor vents in the ablution block showers and laundry. We have been working on finding the source of this smell for some time and have had drainage specialists and plumbers checking the waste systems. They report that the problem is caused by the sub-floor drainage design.

New waste traps have been installed in the showers to prevent back-venting of gas in the pipes and the sump pump is also being checked. We hope this will provide a solution to the problem.



Health and Safety



A pre-winter checklist

It's been a great summer but there is no denying the mornings are growing colder. With the change in the weather it is a good idea to check your vessel to ensure it is secure and ready to handle the coming autumn and winter conditions. We have compiled a brief pre-winter checklist to assist you with your preparation and if you will be using your boat less over the coming months these checks are doubly important.

- ◆ Inspect all plugs and power leads for wear.
- ◆ Check lines for chafing and ensure they are heavy enough for the weight of your boat. Double up if necessary. This is particularly important if your vessel is on a pole mooring.
- ◆ Ensure covers are secure and in good condition. Repair rips or worn covers.
- ◆ Check bilge pumps and ensure they are free of debris and that float switches are operational.
- ◆ Ensure batteries are all in top order.
- ◆ Sun damage can make fenders hard and brittle. If your fenders are in a bad state of repair they won't be protecting your vessel.
- ◆ Remove any dinghies, kayaks, tenders or other vessels from the water. They can fill with rainwater and sink.
- ◆ Secure all items on deck so they can't damage your vessel or others if blown around in high winds.
- ◆ Make sure drains and scuppers are clear.
- ◆ Check chain plates and cleats.
- ◆ Check deck, windows and port lights for leaks.
- ◆ Check all lighting fixtures including navigation lights.
- ◆ Flush your water tank.
- ◆ Discard old fuel. With high petrol prices there is understandably a reluctance to discard any fuel remaining from last year. Storing it over the winter months, especially if it is two-stroke mix, will take it way beyond its use-by date.

Contractor Registration Reminder

We are continuing to work towards implementing improved Health and Safety practices at Seaview Marina. One of the major changes this has led to is in the way we manage contractors on site.

For some time we have required all contractors to be inducted on site and to call into the marina office to sign in and out each time they work at Seaview Marina. These systems ensure we are aware of who is on site, can advise the contractor of any hazards at the marina and allows us to check that their work complies with our Health and Safety policies and Worksafe NZ requirements.

All contractors working on site are also required to hold the appropriate public liability insurance cover.

We hold records of all contractors who have completed the induction and hold the appropriate insurance cover. Please contact us if you would like to know the name of an approved contractor before hiring.

If you have hired a contractor to work on your vessel please ask them to register at the marina office on arrival before commencing work. The induction process will only take 5-10 minutes of their time.



Defibrillators Save Lives

This information could save your life, or that of a fellow boatie—we have a defibrillator on site in the marina office.



A defibrillator is a life-saving machine that delivers an electrical stimulus to the heart to re-start or stabilise heart function.

All marina staff are fully trained in the use of our defibrillator but without any training a by-stander can use them effectively.

Our defibrillator has full instructions with it.

If the marina office is closed and you need a defibrillator—dial 111.

Can you be seen?



Navigation lights must be shown from sunset to sunrise, and during conditions of restricted visibility. (bylaws 3.3 to 3.6)



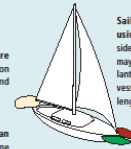
Boats of less than 7 metres length and not capable of more than 7 knots may carry navigation lights or simply display an all-round white light.



Powerboats, underway, less than 12 metres in length may combine their stern and masthead lights into a single all-round white masthead light. The boat should also have red and green sidelights.



Powerboats greater than 12 metres in length should show a white masthead light, red and green side lights and a white stern light.



Sailing boats, underway, (not using power) must show sidelights and a stern light. These may be combined into a tri-colour lantern at the top of the mast on vessels less than 20 metres in length.

Sailing boats under auxiliary motor power should display their sidelights and stern light as well as a masthead light. You should not use a tri-colour lantern when motoring.



Seaview Branch

100 Port Road, Seaview Marina
 P: 04 586 6955
 Monday to Friday 8:30am to 5:30pm
 Saturday and Sunday 8:30am to 5:00pm





Your one-stop shop for

- **Fishing Charters**
- **Fishing tackle sales**
- **Instructional fishing classes**
- **In store seminars**
- **Fishing reports**

All based at Seaview Marina:
 Pete Lamb shop
 Unit 11, Seaview Marina Sea Centre
 100 Port Rd Lower Hutt
 Ph: 04 5894326

Shop hours:
 Monday to Friday 8:30am-5:30pm
 Saturday and Sunday 7am-4pm (summer hours)



Seaview Marina Hours & Contact Details

Office Hours 8am-5pm, Monday to Friday
 8:30am-12 noon, Saturday
Boat Yard Hours 8am-5pm, Monday to Saturday
Office Phone: 04-5683736 **Fax:** 04 5683586

STAFF

Manager:

Alan McLellan M: 027 443 5330
 E: alan@seaviewmarina.co.nz

Marina Administrator:

Suzanne Willis M: 0275 995 857
 E: suzanne@seaviewmarina.co.nz

Assistant Administrator:

Alison Watt M: 021 449 845
 E: alison@seaviewmarina.co.nz

Boat Yard Supervisor:

Mike Croft M: 0275 022 888
 E: mike@seaviewmarina.co.nz

Maintenance Dockhands:

Mark Cousins M: 0274 102 196
 E: mark@seaviewmarina.co.nz
 Jonathan Udy E: jonathan@seaviewmarina.co.nz

www.seaviewmarina.co.nz



FOLLOW US:



Visit us on
Facebook

Stick to the



5

knot rule

Please stick to the 5 Knot speed limit within the marina.

Make no Wake!